

SPECIMEN ONLY

PLAN
 OF SURVEY OF
 THE EXTERIOR BOUNDARIES OF
TROUT LAKE INDIAN RESERVE No. 22
 (LOCATION DESCRIPTION)
 (SEE APPENDIX B3, GUIDELINES FOR PREPARATION OF PLANS)

SCALE 1:1000
 metres 30 20 10 0 30 metres

THIS PLAN IS COMPILED FROM FIELD NOTES OF SURVEY 00000 CLSR EXECUTED DURING THE PERIOD OF MARCH 19 TO MARCH 21, 2010 BY (Surveyor) C.L.S. (Provincial Commission)

LEGEND
 Bearings are MTM grid derived from the calculated bearing 90°46'33" between station 200 and station 201 and are referred to the central meridian MTM Zone 9 (76°30' West), NAD83 (CSRS) Datum.
 Distances shown are horizontal at general ground level and are expressed in metres and decimals thereof.
 To compute MTM coordinates, distances must be reduced to the projection plane by multiplying by the combined scale factor 0.999623.
 All monuments placed according to field notes of survey 00000 CLSR are marked with the unique identification number indicated on the plan, the year "2010" and "I.R.", where applicable.
 Pressure treated marker posts (0.1x0.1x1.20) were placed adjacent to all monuments and marked with the appropriate lot number and "I.R."

LEGEND
 C.L.S. standard post
 Provincial iron post (specify type)
 Old pattern iron bar
 GPS control station
 Reserve Boundary dealt with by this plan.
 Connections

RE: Section 38, Canada Lands Surveys Regulations
 CERTIFIED CORRECT
 On the ____ day of ____ 2010
 (Surveyor) C.L.S. (Provincial Commission)

Department of Natural Resources
 RE: Section 29, Canada Lands Surveys Act
 and Framework Accord (February 2009)
 CONFIRMED

(Appropriate name and title to be inserted here) DATE
 Surveyor General or designate
 (Appropriate Region)
 Surveyor General Branch

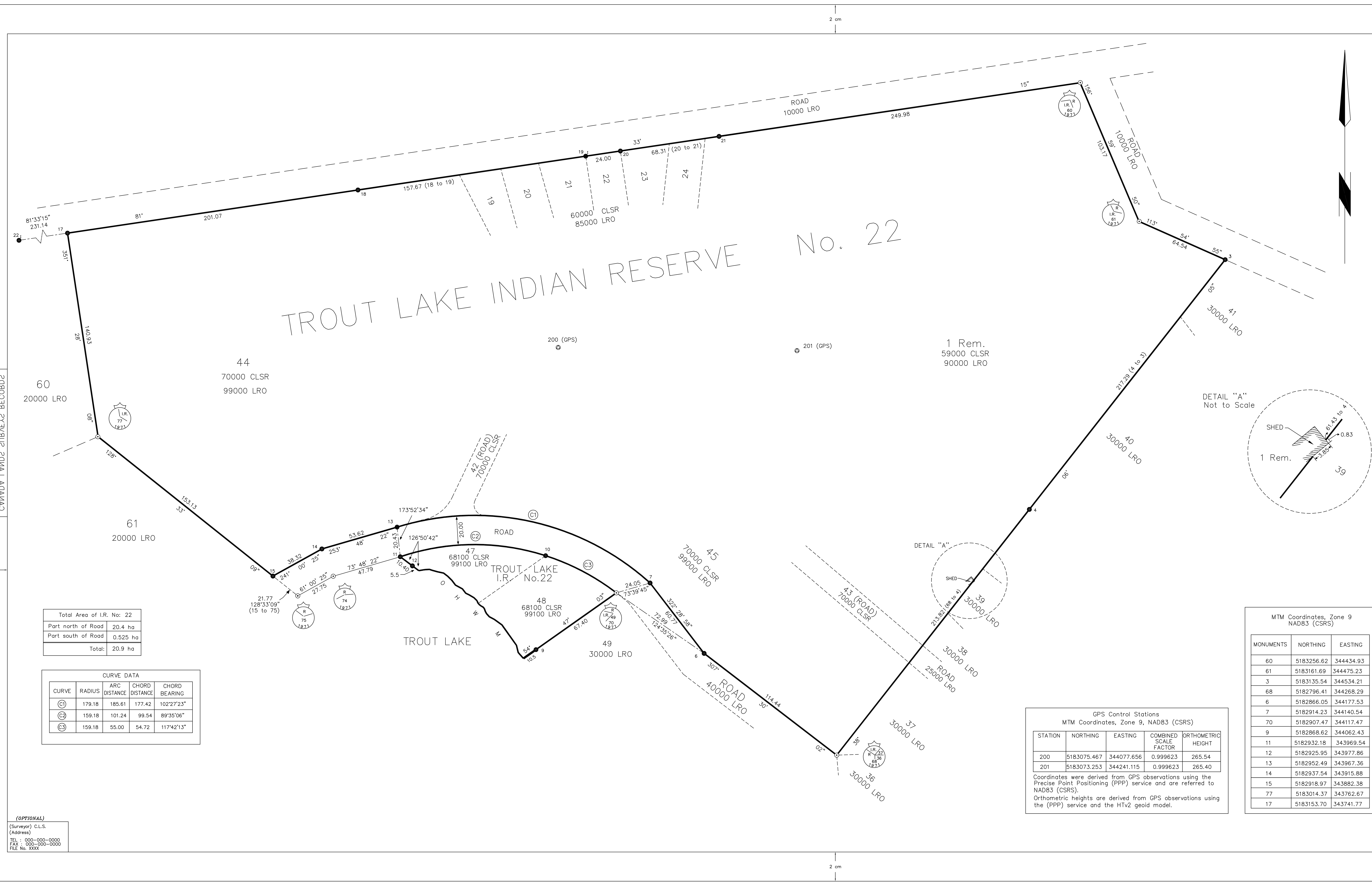
Department of Indian Affairs and Northern Development
 RE: Section 29, Canada Lands Surveys Act
 and Framework Accord (February 2009)
 THIS PLAN IS SATISFACTORY

(Appropriate name and title to be inserted here) DATE
 Manager, Lands
 (Appropriate Region)

(Appropriate name and title to be inserted here) DATE
 Deputy Registrar, Surveys
 Indian Lands, Gatineau, Quebec

ON BEHALF OF THE MINISTER

Project : 201 - XX - XXX
 File : S482X1 - XXXXX
 Checklist : XXX



Total Area of I.R. No. 22

Part north of Road	20.4 ha
Part south of Road	0.525 ha
Total:	20.9 ha

CURVE DATA

CURVE	RADIUS	ARC DISTANCE	CHORD DISTANCE	CHORD BEARING
(C1)	179.18	185.61	177.42	102°27'23"
(C2)	159.18	101.24	99.54	89°35'06"
(C3)	159.18	55.00	54.72	117°42'13"

GPS Control Stations
 MTM Coordinates, Zone 9, NAD83 (CSRS)

STATION	NORTHING	EASTING	COMBINED SCALE FACTOR	ORTHOMETRIC HEIGHT
200	5183075.467	344077.656	0.999623	265.54
201	5183073.253	344241.115	0.999623	265.40

Coordinates were derived from GPS observations using the Precise Point Positioning (PPP) service and are referred to NAD83 (CSRS).
 Orthometric heights are derived from GPS observations using the (PPP) service and the HTv2 geoid model.

MTM Coordinates, Zone 9
 NAD83 (CSRS)

MONUMENTS	NORTHING	EASTING
60	5183256.62	344434.93
61	5183161.69	344475.23
3	5183135.54	344534.21
68	5182796.41	344268.29
6	5182866.05	344177.53
7	5182914.23	344140.54
70	5182907.47	344117.47
9	5182868.62	344062.43
11	5182932.18	343969.54
12	5182925.95	343977.86
13	5182952.49	343967.36
14	5182937.54	343915.88
15	5182918.97	343882.38
77	5183014.37	343762.67
17	5183153.70	343741.77

(OPTIONAL)
 (Surveyor) C.L.S.
 (Address)
 TEL : 000-000-0000
 FAX : 000-000-0000
 REG. NO. XXX