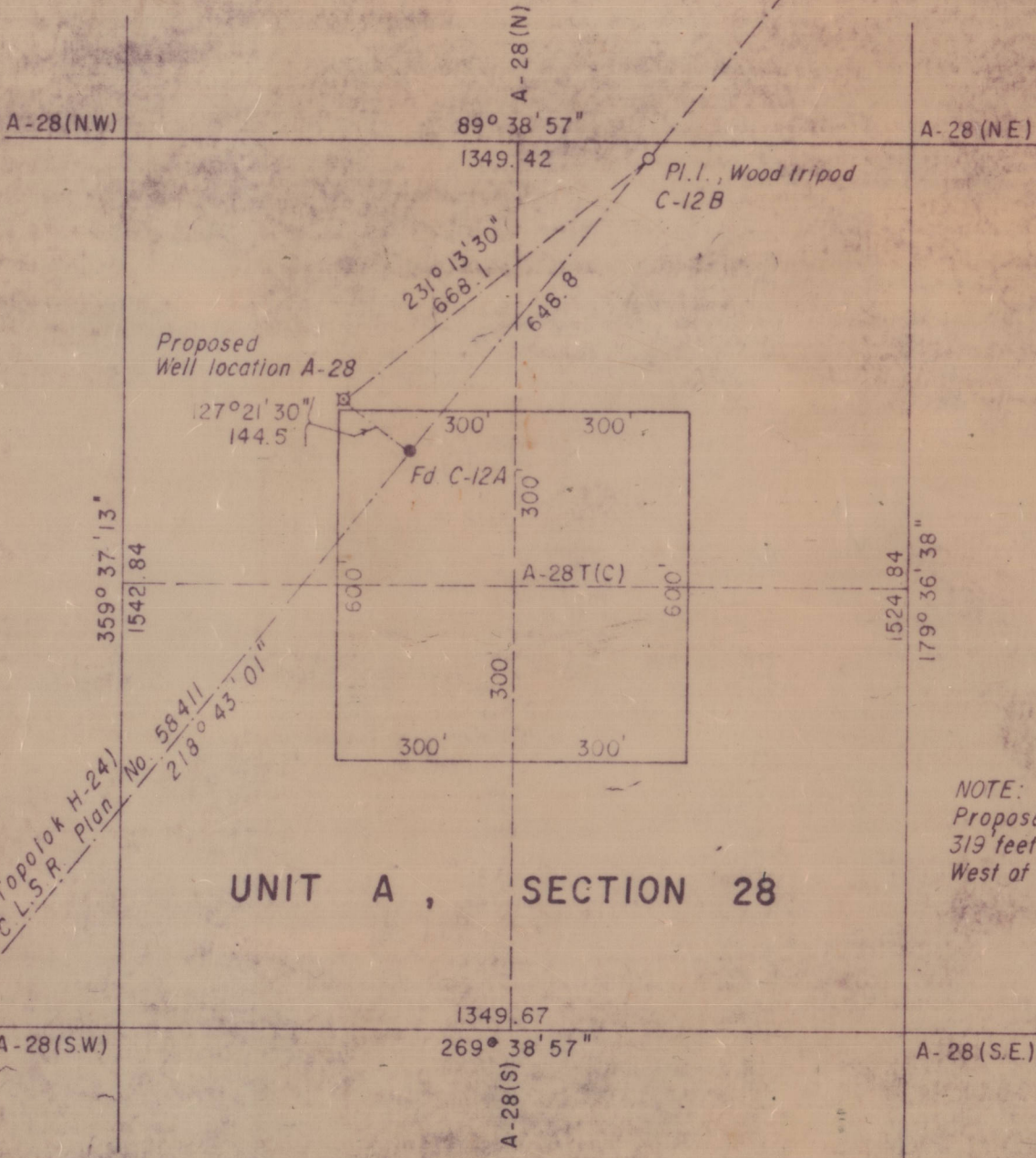


C.L.S.R. plan # 59296

5 Nov. 1974.

REVISED LOCATION

GULF MOBIL YA-YA A-28



CANADA LANDS SURVEYS RECORDS



NOTE:
Proposed Well location is 319 feet North and 296 feet West of A-28T(C).

CANADA LANDS SURVEYS RECORDS

NOTES:

- All distances are in feet, reduced to Sea-Level.
- Bearings are referred to Central Meridian 135° W. Long. and are derived from the bearing 218° 43' 01" C.L.S.R. Plan No. 58411 and 58461 (Fd. C-12 to Fd. C-13).
- T.P.C.S. Scale factor: 0.99990

PRELIMINARY PLAN OF SURVEY OF GULF MOBIL YA-YA A-28(revised)

WELLSITE IN

UNIT .A., SECTION .28., GRID AREA 69° 20' 134° 30'
N. Lat. 69° 17' 10".803 W. Long. 134° 35' 26".921

GULF OIL CANADA LIMITED

SIGNATURES

I CERTIFY THAT THE SURVEY REPRESENTED BY THIS PLAN IS CORRECT AND TRUE AND WAS COMPLETED ON THE 6th DAY OF JAN. 1974.

GULF OIL CANADA LIMITED

[Signature] D.L.S.
[Signature] WITNESS

CO-ORDINATES: (Central Meridian 135° W. Long.)

T.P.C.S.:	25.224.648.2	N;	53.010.3	E (feet)
U.T.M.:	7.686.166.0	N;	516.152.7	E (metres)
GEOGRAPHIC:	69° 17' 10".803	N. Lat.;	134° 35' 26".921	W. Long.
	69.28633°		134.59081°	

Canadian Engineering Surveys Co. Ltd.

Edmonton Alberta



LEGEND

- FOUND SURVEY MONUMENTS
- PLACED OLD PATTERN IRON POSTS
- SCALE: 1" = 300'
- N.T.S. 107C 6/W

JOB No. C-7423 DATE Jan. 9/74 DWG. No. 7423-M-2

Examined by: RSW 10-11-74