

SHELL CANADA LIMITED

PLAN AND FIELD NOTES OF SURVEY

OF

PROPOSED EXPLORATORY WELL

SHELL KUMAK K-16

UNIT K SECTION 16 GRID AREA 69°20'-135°00'
LATITUDE 69°15'32.033" LONGITUDE 135°03'59.456"

NORTHWEST TERRITORIES

(CANADA OIL AND GAS LAND REGULATIONS)

SCALE AS SHOWN

LEGEND

- AUTHORIZED CONTROL MONUMENTS FD. SHOWN THUS
- OTHER CONTROL MONUMENTS FD. SHOWN THUS
- OLD PATTERN IRON POSTS PLANTED SHOWN THUS
- TRAVERSE LINES SHOWN THUS
- CO-ORDINATES ARE U.T.M. AND REFERRED TO 135° MERIDIAN AND ARE DERIVED FROM THE BEARING 107°56'31" BETWEEN AUTHORIZED CONTROL MONUMENTS "VIEW" AND "K1" CLSR PLAN #59158
- DISTANCES SHOWN ARE ACTUAL MEASURED DISTANCES CORRECTED TO SEA LEVEL AND REDUCED TO U.T.M. PLANE.
- SCALE FACTOR OF 0.9996 AT THE REFERENCE MERIDIAN WAS USED FOR ALL DISTANCES MEASURED.
- ALL DISTANCES ARE MEASURED BY TELLUROMETER EXCEPT THOSE SHOWN AS "cc" AND ARE IN METERS AND DECIMALS THEREOF.
- SURVEY WAS CONDUCTED PRIOR TO COMPLETION OF WELL THEREFORE WELLHEAD IS NOT NECESSARILY A MONUMENT.

AFFIDAVIT

I, ALEXANDER HITTEL, OF THE CITY OF CALGARY, IN THE PROVINCE OF ALBERTA, DOMINION LAND SURVEYOR, MAKE OATH AND SAY THAT I HAVE IN MY OWN PROPER PERSON, ACCORDING TO LAW AND THE INSTRUCTIONS OF THE SURVEYOR GENERAL OF CANADA LANDS, FAITHFULLY AND CORRECTLY EXECUTED THE SURVEY SHOWN BY THIS PLAN AND FIELD NOTES, AND THAT THE SAID PLAN AND FIELD NOTES ARE CORRECT AND TRUE TO THE BEST OF MY KNOWLEDGE AND BELIEF.

SO HELP ME GOD.

A. Hittel
D.L.S.

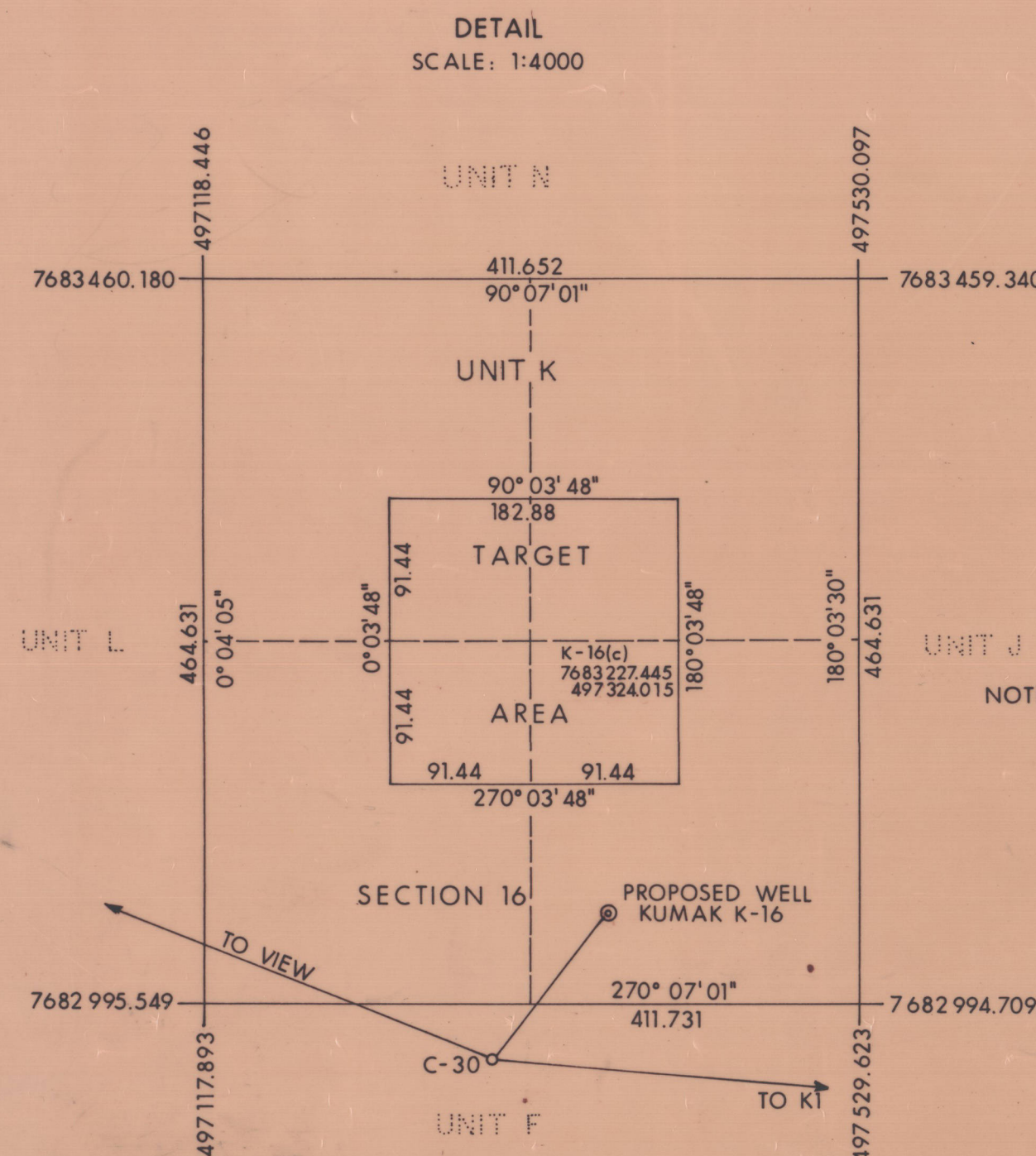
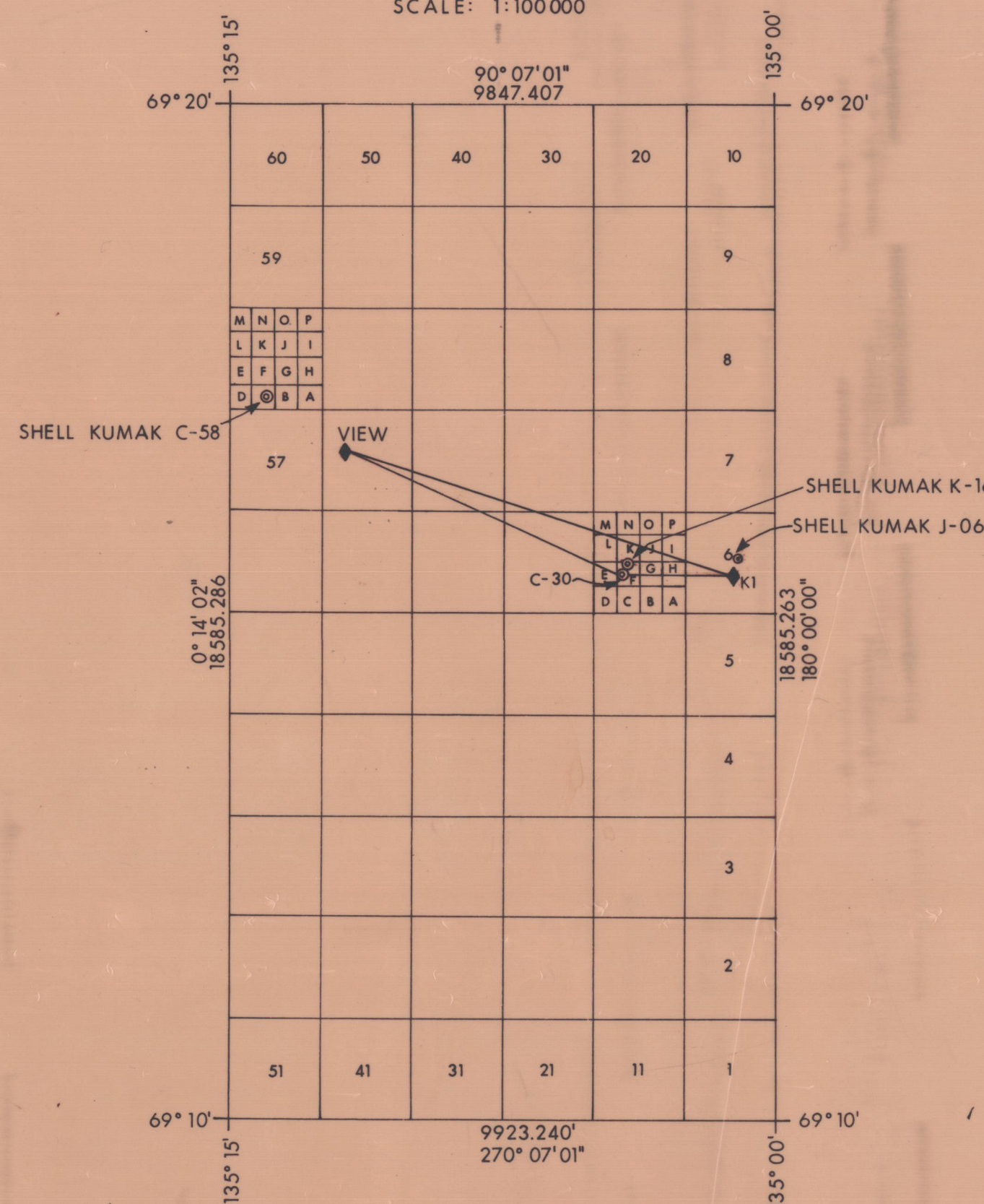
SWORN BEFORE ME AT CALGARY
THIS 2 DAY OF July 1975

A. G. Schwartz
COMMISSIONER OF OATHS IN
THE PROVINCE OF ALBERTA

THIS SURVEY WAS EXECUTED DURING THE PERIOD FROM
MAY 9TH TO MAY 10TH 1975.
BY ALEXANDER HITTEL D.L.S.

Department of Energy, Mines and Resources
Ottawa, October 15, 1975
Re: Section 16 Canada Oil and Gas Land
Regulations
Approved
Surveyor General

GRID AREA: 69°20' - 135°00'
SCALE: 1:100000



NOTE: PROPOSED WELL LOCATED
173.421 SOUTH AND 46.948
EAST OF K-16 (c)

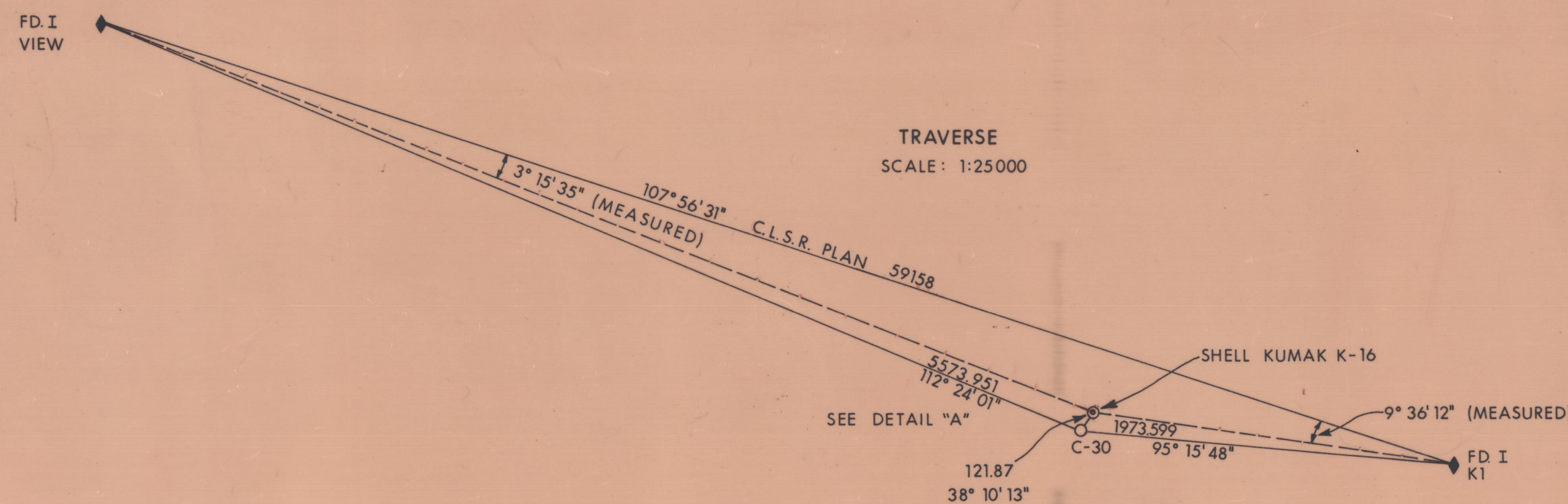


TABLE OF CO-ORDINATES

STATION	LATITUDE	LONGITUDE	U.T.M. RM 135° ZONE 8		
			NORTHINGS	EASTINGS	ELEVATION
GRID AREA N.E. Cor.	69° 20'	135° 00'	7 691 353.038	500 000.00	
GRID AREA S.E. Cor.	69° 10'	135° 00'	7 672 767.775	500 000.00	
GRID AREA S.W. Cor.	69° 10'	135° 15'	7 672 788.008	490 076.781	
GRID AREA N.W. Cor.	69° 20'	135° 15'	7 691 373.139	490 152.614	
VIEW	69° 16' 37.14"	135° 11' 56.27"	7 685 082.240	492 142.470	39.6 m
K1	69° 15' 23.14"	135° 01' 07.31"	7 682 777.245	499 260.906	14.0 m
ADJUSTED CO-ORDINATES					
C-30	69° 15' 28.937"	135° 04' 06.306"	7 682 958.207	497 295.649	7.31 m
KUMAK K-16	69° 15' 32.033"	135° 03' 59.456"	7 683 054.024	497 370.968	2.90 m

U.T.M. CO-ORDINATES IN TABLE ARE BASED ON 1970 AERODIST VALUES.
CO-ORDINATES ADJUSTED BY "GALS" PROGRAM.

DETAIL "A" (NOT TO SCALE)

