

A Copy of this plan is filed
in the Land Titles Office
at Calgary as 9011313.

CANADA LANDS SURVEYS RECORDS
7 23 1 2 9
DATE 21 JUNE 1990

PLAN AND FIELD NOTES
OF
RESURVEY
OF

LOTS 32 to 35, BLOCK 19
IN THE
TOWNSITE OF BANFF
BANFF COORDINATED SURVEY AREA
BANFF NATIONAL PARK
PROVINCE OF ALBERTA

SCALE = 1 : 500

THIS SURVEY WAS EXECUTED BETWEEN OCTOBER 11th. and OCTOBER 17th., 1989
BY: WILLIAM PANG, A.L.S. 1989

THIS PLAN SUPERSEDES LOTS 32 to 35, BLOCK 19, AS SHOWN ON PLAN 72126(C.L.S.R.), 8910504(L.T.O.)

LEGEND :

Bearings are grid and derived from the line between Coordinate Control Monument Nos. CCM 13, CCM 14 as shown in F.B. 32927 (C.L.S.R.) and are referred to the meridian through longitude 117°W. Distances shown are horizontal at general ground level and are in metres and decimals thereof. To compute 3° T.M. coordinates distances have been converted to sea level and to the projection plane by applying a combined conversion factor of 0.999807.

'(c)' denotes calculated.
Alberta Statutory Iron posts are shown thus : Found, Planted (marked PI44).
Coordinate Control Monuments are shown thus : CCM
Lands dealt with by this plan are outlined thus :
Traverse lines and stations are shown thus :
3° T.M. coordinate table numbers are shown thus :
All planted posts have been marked with the appropriate lot and block designations, and 'R' for road where applicable.

C.L.S. standard post found shown thus :
All hanging lines were checked measured.
'A' denotes arc.
'C' denotes chord.
'CB' denotes chord bearing.

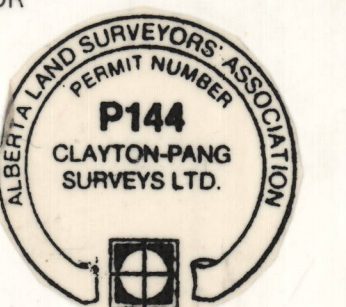
SURVEYOR'S AFFIDAVIT :

I, WILLIAM PANG, of the City of Calgary, Alberta Land Surveyor, make oath and say that I have in my own proper person, according to law and the instructions of the Surveyor General of Canada Lands faithfully and correctly executed the survey shown by this plan and field notes and that the said plan and field notes are correct and true to the best of my knowledge and belief. SO HELP ME GOD.

SWORN BEFORE ME at the City of
CALGARY, in the Province of Alberta,
this 17th day of OCTOBER, 1989.

R. W. Violette
ALBERTA LAND SURVEYOR

B. Violette
Roger W. Violette
Expires September 15th., 1990.
A Commissioner for Oaths in and for the Province of Alberta.

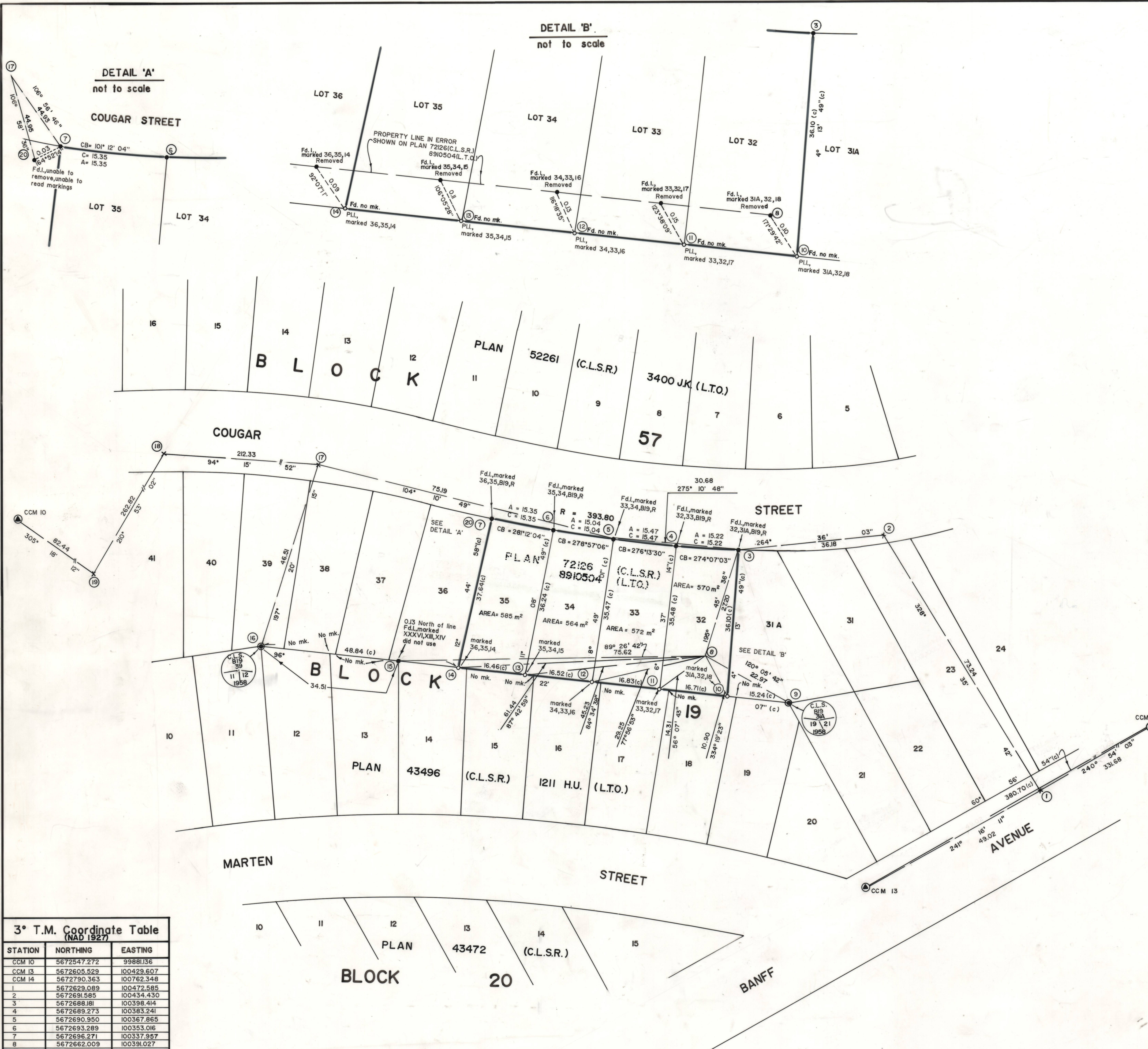


Department of Energy, Mines and Resources
Canada June 20 1990
Re: Section 29 Canada Lands Surveys Act
Confirmed
S. Raymond
Surveyor General

Department of the Environment
Ottawa June 6 1990
Re: Section 29 Canada Lands Surveys Act
This Survey and plan are satisfactory.
S. Raymond
Minister

PHONE: 228-7982 CLAYTON & PANG SURVEYS LTD.
DRAWN: RWV Suite No: 201, 524 - 17th Avenue S.W.
FILE: 88-1635 Calgary, Alberta. T2S-0B2.

Examined by: P.J.S./S.A.H. ok
Date: 90-05-03
Item: E-88 P.C. ALTA.



3° T.M. Coordinate Table (NAD 1927)		
STATION	NORTHING	EASTING
CCM 10	5672547.272	9989136
CCM 13	5672605.323	100429.607
CCM 14	5672790.363	100762.348
1	5672629.089	100472.585
2	5672691.585	100434.430
3	5672688.181	100398.414
4	5672689.273	100383.241
5	5672690.350	100367.865
6	5672693.289	100353.066
7	5672696.271	100337.957
8	5672662.009	100391.027
9	5672650.493	100410.897
10	5672652.183	100395.751
11	5672654.036	100379.150
12	5672655.902	100362.428
13	5672657.735	100346.010
14	5672659.561	100329.651
15	5672661.277	100315.431
16	5672664.978	100281.24
17	5672709.366	100294.981
18	5672725.152	100083.283
19	5672498.639	99948.402
20	5672696.244	100337.965